



PIAZZA

ALL SEASONS PATIO HEATER

AUGUST 2010



OPERATIONS, MAINTENANCE & WARRANTY INFORMATION

PLEASE RETAIN THIS INSTRUCTION MANUAL FOR FUTURE REFERENCE.

CONTENTS

Introduction	Pg. 2
Assembly of Heater	Pg. 3
Installation	Pg. 4
Operating Instructions	Pg. 6
Servicing	Pg. 7
Warranty Information	Pg. 8
Injector Sizes	Pg. 8
Warranty Registration	Pg. 9

INTRODUCTION

Congratulations on purchasing your YUNCA PIAZZA ALL SEASONS PATIO HEATER.

Please fill out the warranty registration card and return it promptly.

This instruction manual should stay with the appliance, and is for the reference of the user and service person.

Only authorised service technicians should undertake any repairs or maintenance on this product.

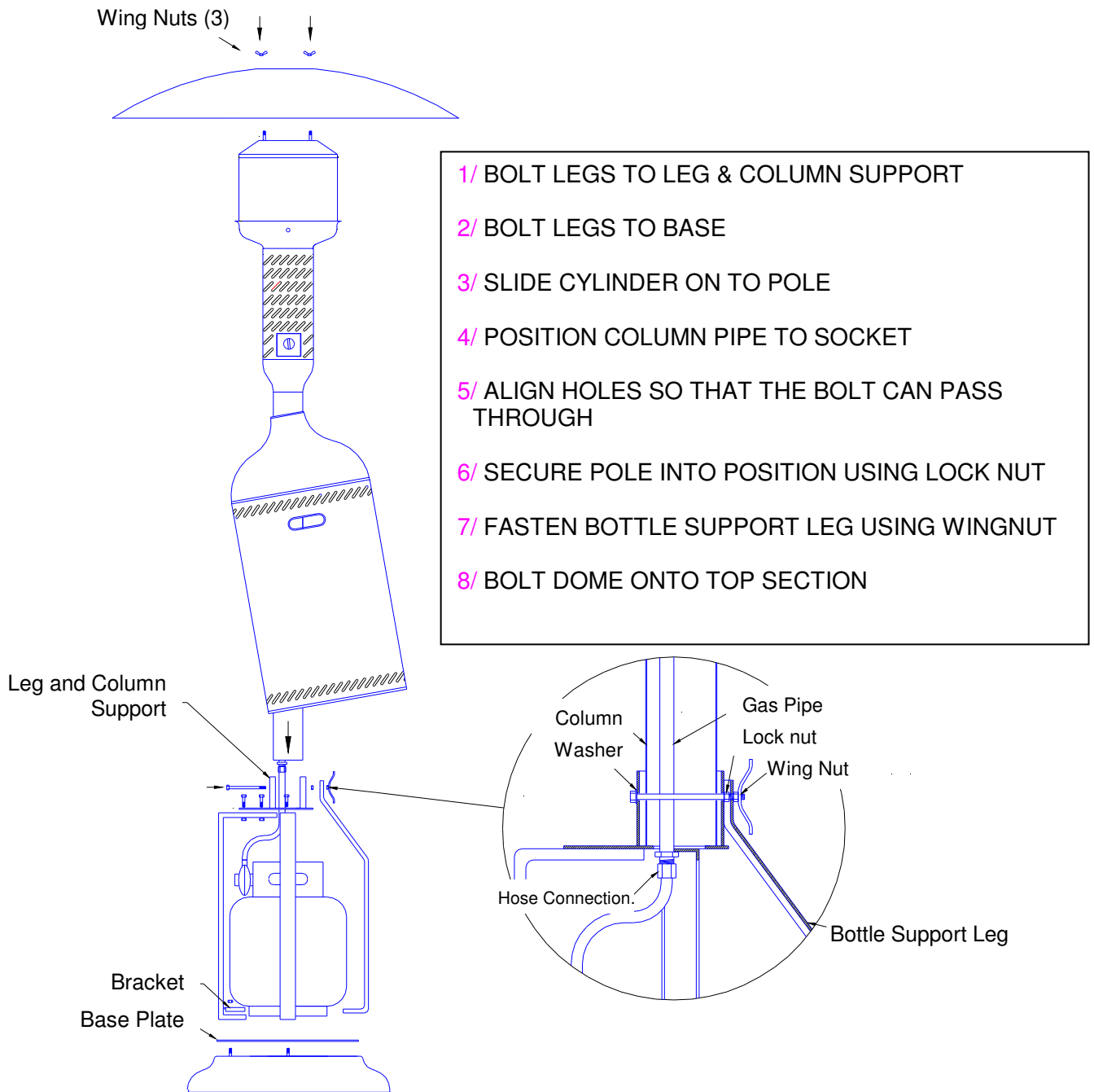
It is recommended that the Heater has an annual maintenance check to ensure correct, long term operation.

WARNING: Do not store or use aerosols or other flammable materials near this appliance.

WARNING: The Yunca All Seasons Patio Heater is an unflued gas appliance so adequate ventilation must always be provided to ensure safe efficient use. For installation instructions see page four.

To assemble your heater please refer to the following page.

ASSEMBLY OF HEATER

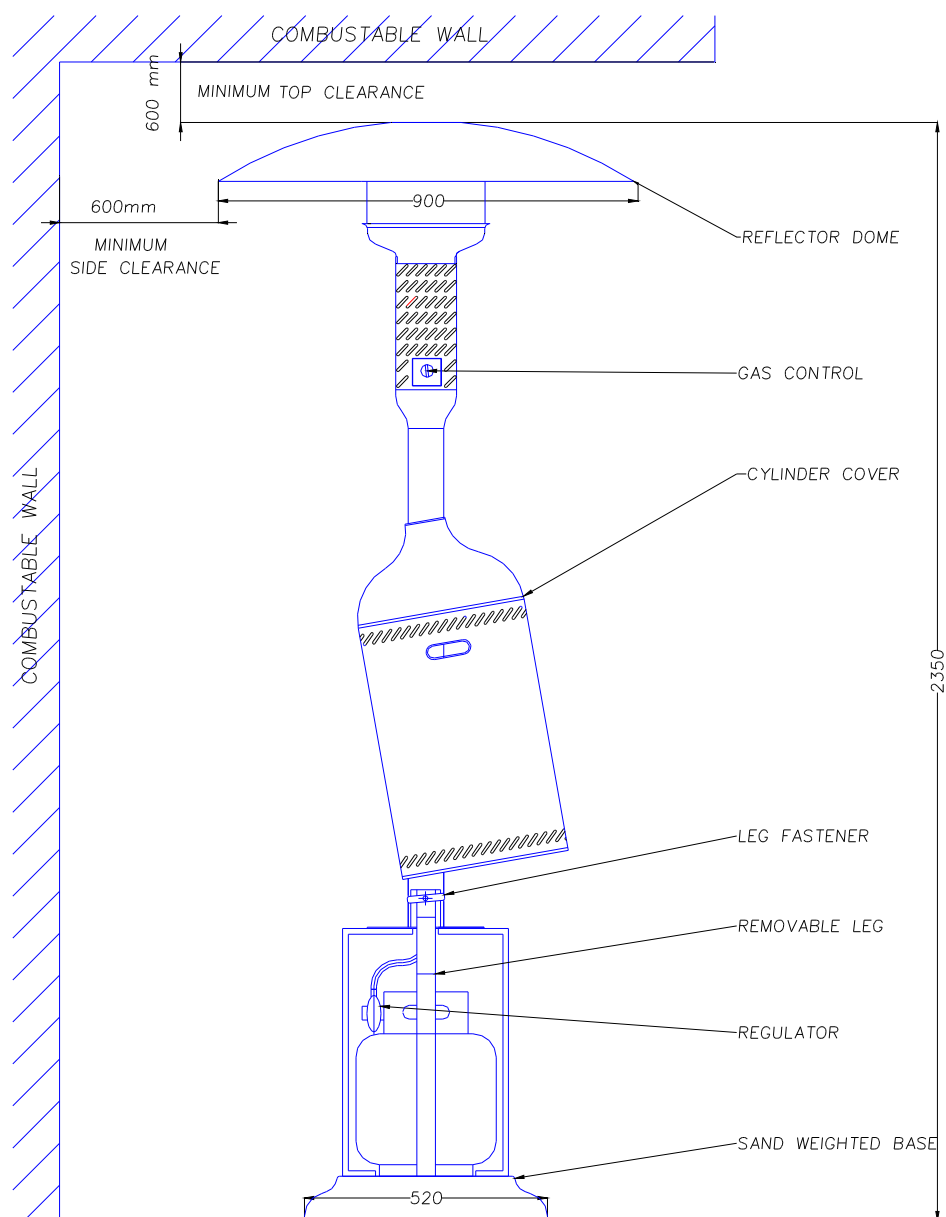


INSTALLATION and SAFE OPERATION

WARNING: As the Yunca PIAZZA All Seasons Patio Heater is an unflued appliance, adequate ventilation must always be provided.

The heater will function well outside, but should only be used when wind speeds are below 8km/h when heater is turned down or 16km/h when heater is on full. The heater will effectively heat a radius of around 3m so its position should be chosen to allow efficient use of heat without impeding peoples' movement.

WARNING: The clearances shown below are to be maintained at all times, extra care should be taken when heater is used under tarpaulins or in marquees. The base of the heater is filled with sand before assembly. This improves stability of the Patio Heater when the LPG bottle is low.



This heater should be used in accordance with "Gas Installation Code AG601", and/or any local authority rules.

Each Yunca PIAZZA All Seasons Patio Heater is factory set to the appropriate operating pressure for the gas type with which it was factory equipped. If gas pressure requires adjustment, or a gas type conversion is required, the operating pressure can be tested at the test nipple on the side of the BM 733 control. Operating pressure is adjusted at either the LPG or NG in line regulator.

Gas Type, Pressures and jet sizes appear on data plate on the Patio Heater.

Pressures	2.75kpa (LPG)	1.0kpa (NG).
Main jet sizes	1.6mm(LPG)	2.8mm(NG)
Pilot jet sizes	0.23mm(LPG)	0.35mm(NG)
Input	36MJ/hr	

When running on Natural Gas the heater can be left mobile and connected to an approved "bayonet" fitting, or may be permanently mounted and piped.

If the heater is being installed permanently connected to the supply, a manual isolating valve should be installed as close as is practical to the appliance.

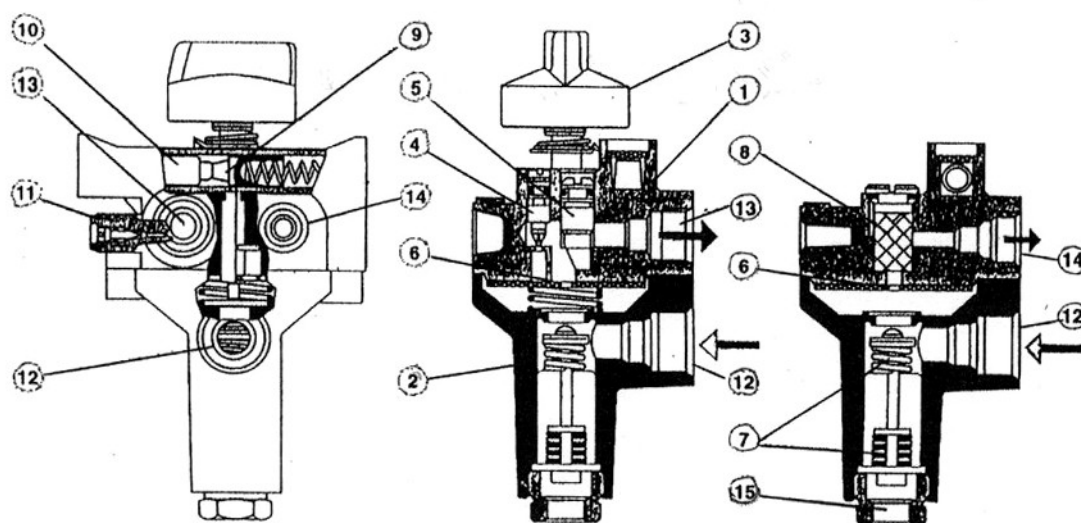
To get the maximum life from this product we suggest that it is covered when stored.

The Piazza All Seasons Patio Heater uses the BM733 control valve, a functional view of this is shown below.

Legend to functional diagram

- | | | |
|-------------------------------|-------------------------|------------------------------|
| 1. Valve body, top section | 6. Disk valve | 11. Pressure test nipple |
| 2. Valve body, bottom section | 7. Flame failure device | 12. Main gas inlet |
| 3. Control knob | 8. Pilot gas filter | 13. Main gas outlet |
| 4. Min. Setting screw | 9. Piezo hammer | 14. Pilot gas outlet |
| 5. Max. Setting screw | 10. Piezo crystal | 15. Thermocouple Connection. |

Functional diagrams BM 733



OPERATING

Lighting instructions

1. Ensure that bottle is connected and supply valve open (LPG).
2. Press the control knob in and turn to pilot setting.
3. Continue to hold the control knob in (N.B. if the heater has been unused for a period of time you may need to **allow up to one and a half minutes** for air to purge from gas line). Slightly tilting the heater will assist the air to purge.
4. While still holding the control knob in, turn to “star” setting (an audible click will be heard).
5. The control knob must be held in at the “star” setting for a further 20 seconds to allow the flame failure device to engage.
6. If the pilot has not ignited, repeat the procedure.
7. Release the control knob (slowly) and turn to the flame setting required.



Changing a bottle (LPG).

When the flame turns abnormally yellow and becomes smaller it is time to change the gas bottle. To do this simply slide the round cylinder cover up the main stem to expose the gas cylinder.

Shut off gas supply at the gas bottle. Remove the leg that is held on with a wing nut. Disconnect regulator from the bottle and exchange bottles.

Dome Removal.

The reflective dome is designed to be easily removed so the Patio Heater can be wheeled through doorways etc.

WARNING: This should **only** be done after the heater has been off for a sufficient enough time to **fully cool down**.

Abnormal performance.

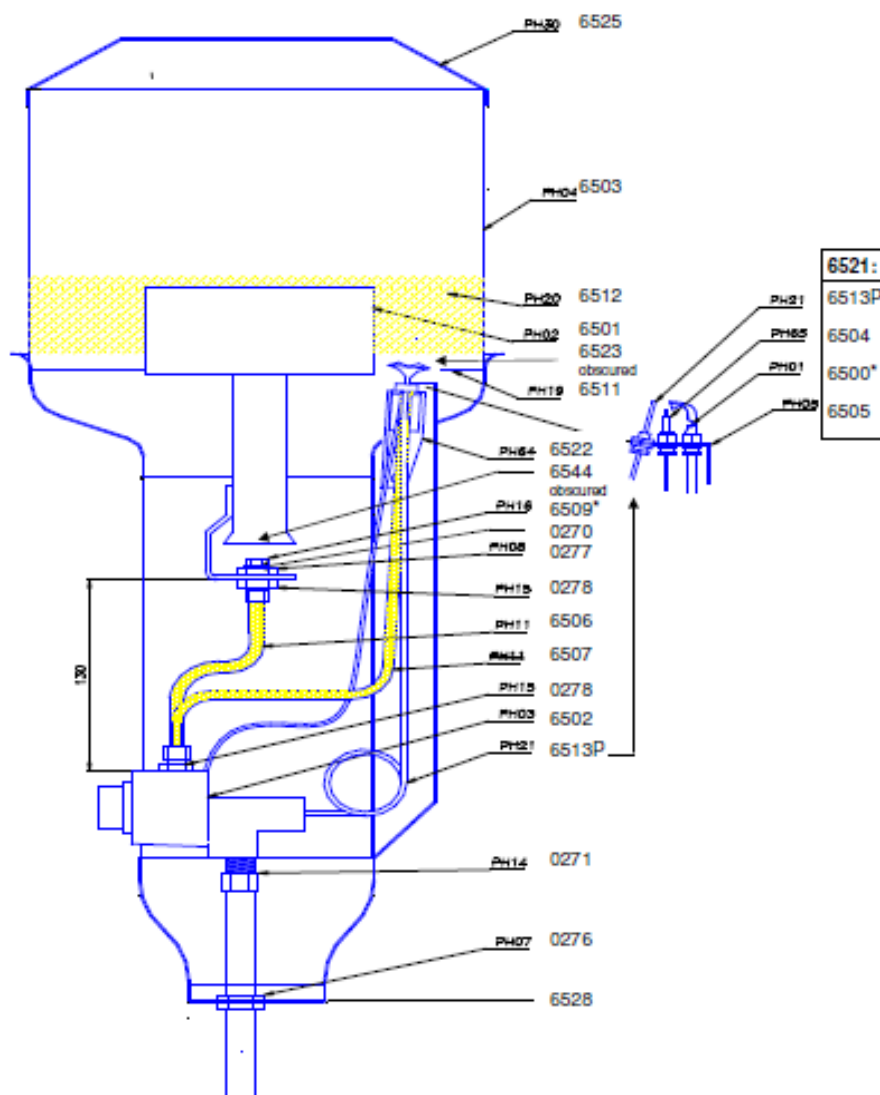
If at any time the Patio Heater exhibits any problem or abnormal noise it should be immediately turned off. The Patio heater should be checked and tested by authorised service technician before being used.

SERVICING

CAUTION: Only authorised service technicians should undertake any repairs or Maintenance on this product.

A detailed drawing of the gas components in this product is shown below. Part numbers can be used to order replacement parts, if needed. The "Gas ID" file on our website product manuals page (www.yunca.co.nz) may also assist in identifying spare parts.

To access these components the perforated sheet metal cylinder that surrounds the control must be removed. This is done by removing the screws top and bottom and the channel section pilot pipe cover.



As with all gas appliances, regular servicing will improve the trouble free operation of this appliance. This service should cover the following

- Leak test all joints
 - Check operating pressures
 - Clean main and pilot orifices
 - Clean main burner venturi as insects and dirt may gather there.
 - Inspect flexible gas hose
 - Brush any soot etc. that may have gathered on stainless steel mesh.
- Please fill out the warranty card (page 9) and return it to Yunca.

CUSTOMER COPY

YUNCA PIAZZA All Seasons Patio Heater WARRANTY REGISTRATION:

Serial No. _____ Gas type: _____ Purchase Date: _____

Purchasers' Name: _____

Purchasers' Address: _____

City: _____ PostCode: _____ Telephone: (0) _____

Where Purchased: _____

Installed By (If permanent installation) _____ Date _____

Manufactured in Dunedin by

Yunca Gas

PO Box 500

Dunedin 9054

Ph (03) 488 4342

Email dunedin@yunca.co.nz

Cut along this line:

This section must be returned within 10 days of purchase.

Serial No. _____ Gas type: _____ Purchase Date: _____

Purchasers' Name: _____

Purchasers' Address: _____

City: _____ PostCode: _____ Telephone: (0) _____

Where Purchased: _____

Installed By (If permanent installation) _____ Date _____

Return to: Yunca Heating
PO Box 932
Invercargill 9840